

St. John's Evangelical Lutheran Church

The Vine
MISSION STATEMENT
The mission of St. John's Evangelical Lutheran Church is to lovingly proclaim the Gospel among all people in order to form and nurture loving communities which confess by word and deed that Jesus is Lord and Savior



The January Vine 2010
The Newsletter of St. John's Evangelical Lutheran Church & School
(718) 761-1600

Divine Service:
Saturdays @ 5PM
Sundays @ 8 & 10:45 AM
Sundays @ 9:15 AM Family Education Hour
And Sunday School

ALL ARE WELCOME!

Church:
216 Jewett Avenue (Corner of Jewett & Post)
Staten Island, NY 10302 **(no mail)**
Email: stjohnslutheranchurchoffice@gmail.com
Website: www.stjohnslutheransi.org
School & Church Office
663 Manor Road, Staten Island, NY 10314

Volume 2010

Issue #1

Our Partnership
January, 2010

Taking Jesus Home

Dear Members and Friends of St. John's Lutheran Church and School,

Well the pastor was frantic. When he arrived early that Christmas morning, to make sure everything was just right, everything seemed to be in order. In fact, it was beautiful. But it all changed when he'd stopped at the almost life-sized Nativity Set. Standing there in preparation to meditate a bit before the manger, he realized that the Christ child was gone. And now he was looking everywhere, and it was nowhere to be found. It could not have been mislaid or lost. Someone had stolen the baby out of the manger. Later when the congregation had gathered for worship, the pastor informed them of the thief. In a voice of incredulity, he visually scanned those people whom he knew and loved, and he told them he couldn't understand such a callous act. And, in no uncertain terms, he informed them the Baby Jesus must be returned.

And he waited and waited. The manger remained empty the rest of the day. Later that afternoon, depressed and defeated, he was walking through the wintry streets when he saw Tommy. Shabbily dressed against the cold, Tommy was proudly pulling a bright and shining new red wagon, and the pastor knew how much his parents would have had to scrimp and save for that Christmas present and with the surge of Christmas

spirit again in his heart, he hurried to wish Tommy a Merry Christmas.

Coming up to Tommy and his wagon, the pastor saw that the wagon wasn't empty. The stolen baby Jesus was in the wagon. Running in front of Tommy, he knelt down face to face. The pastor's face was grim and disappointed. He told Tommy that stealing was very wrong and how the entire congregation had been hurt by his actions. Then Tommy's eyes filled with penitential tears. And then Tommy spoke up and said; "But Pastor, I didn't steal Jesus. It wasn't like that at all." Wiping tears from his face, Tommy swallowed hard and said; "Well, it's just that I've been asking Jesus for a red wagon for Christmas for a long time, and you see, I promised Him when I got it, He'd be the first one I took out for a ride."

Officially the Christmas Season ends on January 6th, the Feast of the Epiphany of our Lord. For many it ended on December 26th and for sure January 1st is the last day to have a tree up and the lights outside still on. And sadly as the tree is thrown out and the lights shut down and the decorations put away, so the joy, peace, and hope of the Season of Christmas comes to a conclusion as well. Christmas Eve worshipers come and go back home, having fulfilled in their mind their yearly religious obligations.

Sadly, however, while they may have saw and stood in the light of the Holy Night, they left Jesus where they saw Him. Their joy, and peace and hope will be short lived and soon only a distant memory.

I pray that this is not your situation. I pray that unlike the innkeeper who had no room for the Holy Family, you invited and took Jesus into the inn of your heart. I hope and pray that through faith in Christ Jesus, your hope and joy and peace remain as lively as they did on Christmas morn. The blessings of Christmas morn will remain real and fresh for us as long as we through Word and Sacrament renew our faith in the Christ child. Taking Jesus home means that in 2010 I have a concerned partner who is living inside me and always ready to supply all my needs. It means that I can face the uncertainty of 2010 with confidence, knowing that Immanuel (God with us) is not only with me, but is the one who secured my salvation through His suffering and death on the cross. It means that the One who lives inside me is the same one who rose on Easter morning and will provide me with that same resurrected life.

For those who took Jesus home with them, 2010 will be a year of grace and mercy, for Christ was born to be our redeemer from sin and death. Now confident of His mercy, I know that "all things work for the good of them that love God."

I pray that this confidence is yours – that you have taken Jesus home with you. Gather often and regularly during 2010 around Word and Sacrament so that this confidence in Christ Jesus as your Savior is renewed. And have a Blessed New Year!

In Christ,

Rev. Dr. Richard Lohmeyer, Pastor

More on Stewardship....
January 2010

Remember when we were kids playing in the schoolyard? In a relay race we would here...On your mark, get set, GO!

As we get ready for a new year, 2010 to arrive, we need to get started in growing as good stewards and followers of Jesus Christ.

As we sing certain hymns we are reminded that each day is a new opportunity to start over....Even though we are creatures of habit, long ingrained in us....each day is a time for new beginnings. As good stewards we should take seriously that it is vital to grow in the WORD. It is important to be an active part of the body of believers which reinforces and supports those in the Spirit of God. This past year we have put a greater accent on learning our Christian faith. There have been more and better attended Bible Studies. Sunday School has begun to show signs of good things happening. The singing program, especially our childrens choir has become a regular part of many worship services. Much of this is due to the wonderful efforts of our Director of Music.

How does this happen? The only way to start is by starting. As an example, you can read much about swimming, but it doesn't happen until you jump into the water. You can read about how to pray. But the only way to learn is to pray. Pray without ceasing, as St. Paul

says. You can become proficient in the Bible but you have to read and study constantly until it begins to grow on you.

If you once were active in attending church, and for whatever reason you turned away, the first time back is the hardest, but for contentment and your soul's salvation, its worth it. God will give you the strength and the courage to start over. Don't be content with your old habits. Try your hand at a new beginning.

You are all encouraged to grow and become better Stewards. Be stewards of your entire life, for this is God pleasing. Your time and your talents are very much needed at St. John's, and look at the mounting bills our church is required to pay. You will see that a percentage of your financial blessings is needed as well. As good stewards put the Lord first in everything you do.

May the New Year be a new beginning for everyone. By God's grace you will be blessed for it. Amen

The Stewardship Committee
Walter Francis, Chairman

From Our Church Fathers:



Basil the Great of Caesarea was born ad 329, Caesarea Mazaca, Cappadocia died January 1, 379, Caesarea; [early Church Father](#) who defended the orthodox faith against the heretical Arians. As bishop of Caesarea he wrote several works on monasticism, theology, and [canon law](#). He was declared a saint soon after his death.

Who is there who can hear the names of the Holy Spirit and not feel exaltation in his soul, but lift up his thoughts to that supreme nature? For he is called, the Spirit of God, the Spirit of Truth, who proceeds from the Father, the upright Spirit, the guiding Spirit. His chief and distinguishing name is Holy Spirit.

To the Spirit all creatures turn for their sanctification; all who live virtuously seek him, and are by his influence, refreshed and helped towards their own natural end.

He is the source of holiness, the light of our understanding, for to every mind he offers his own light for the discovery of truth.

Though by nature he is inaccessible, yet through his generosity men can receive him in themselves. He fills all creatures with his power, but only those who

are worthy can participate in him. But all do not share him in the same measure; he distributes his power in proportion to men's faith.

He is simple in essence, but manifold in power. He is present to each in his fullness is present everywhere. He is divided, but does not suffer by the division; all share in him, but he remains whole, like a sunbeam whose kindly influence benefits each creature as though it were present to that creature alone, and shines over land and sea and dissolves in the air.

So too the Spirit is present like the sun to each individual who is capable of receiving him, and emits an influence which is sufficient to help them all, but is not divided; and they profit by sharing in him according to their natures, not according to his power.

Through him hearts are raised on high, the weak are led by the hand, those who are advanced gain perfection. He it is who shines on those whose hearts are purified and stainless and makes them truly spiritual through the common union they have with him.

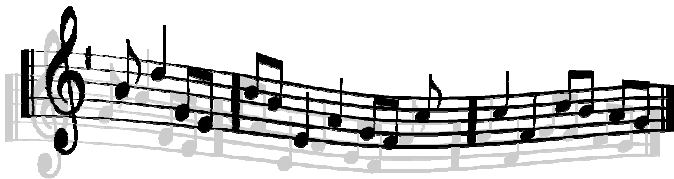
Even as bright and shining bodies, once touched by a ray of light falling on them, become even more glorious and themselves cast another light, so too souls that carry the Spirit are enlightened by the Spirit, become spiritual themselves and send forth grace upon others.

This grace enables them to foresee the future, to understand mysteries, to grasp hidden things, to

St. John's Lutheran Church encourages ALL to go online to view the newsletter, if possible. Click onto the church side, and then click onto the "VINE". There is also a link that has the church calendar and the serving schedule.

If you are viewing the "VINE" online and wish to opt out of the mailings, please contact the church office via e-mail, to request being taken off the mailing list.

stjohnslutheranchurchoffice@gamil.com



Dearest Friends in Christ Jesus,

Wow! Both choirs and school chorus had a very busy month. December began with a service of lessons and carols on the 13th. Despite a very rainy afternoon, many of you came out and supported our church choirs. Those who couldn't make it missed a wonderful afternoon. I truly appreciate everyone who attended this wonderful service. Thank you to all those who participated in this service, you all helped to make this a memorable afternoon. A special thanks to both our church choirs who did an excellent job on their singing and their percussion. Also, thank you to Judy Lohmeyer who headed and served the refreshments following the service.

On the 17th. the school performed its annual Christmas Pageant. All students did an excellent job. The evening started with preludes from our students who are studying guitar, piano, and violin

taught by the Staten Island Music Conservatory. Our school chorus is compiled of students form K - 6th. grade. Our 7th. grade were narrators, and our 8th. grade were our actors, stage hands, chorus assistant and director. I coordinated the pageant and directed the school chorus. A special thank you to Pastor Lohmeyer who took time out of a very busy Advent season to construct a stable that was used for the pageant and for the 4 p.m. service on Christmas Eve. I am very proud of everyone who participated in this wonderful event.

Finally our month wrapped up with our children choir singing at the 4 p.m. Christmas Eve service and our adult choir at the 11 p.m. Both choirs once again did an incredible job. I thank all of you enough for your constant dedication and hard work. I truly enjoy working with all of you.

I hope everyone will join me as we strive together to make our music ministry here at St. John's successful as it continues to grow. May you all have a healthy and blessed New Year.

Thank you to our Lessons and Carols Participants

Officiant - The Rev. Dr. Richard Lohmeyer

Lectors - Walter Francis
Kayleigh Peters
Daniel Wuerdeman
Bruce Mohlenhoff
Pastor Lohmeyer

Greeters - Henry and Emmy Alvestad

Ushers - Robert and Nick Abugel

Members of the Adult Choir:

Rhoda Browne
Joan Mohlenhoff Susan Neitzel
Janis Szoke Russel Browne
Anita Neitzel Bill Mohlenhoff
Barbara Pfaff Lazlo Szoke

Members of the Children’s Choir:

Frank Cioffi
Kyle Clandorf
Chelsea Hermann
Katrina Hermann
Joseph Malak
Hope Quanci
Skye Quanci
Andrew Reich

In Christ,
Tommy Sax

St. John’s Ladies Guild

Our new year of activity begins on January 7th,
7:30PM, at the church. We anticipate interesting,
fun things for our Show and/or Tell Program. Come
share a special “something”, a hobby, a memory, a
song, a poem, - whatever! Whether serious, silly, or
surprising, your input will make the evening
memorable.

May each day of this New Year draw you closer to
our wonderful Savior.

Blessings in Jesus,
Joan Mohlenhoff
Secretary

~~~~~  
**KNOWING – GROWING – SHOWING**

Increase your knowledge!  
Grow spiritually and raise your level of spirituality!  
Let your faith show in your words & deeds!

Be a Knowing – Growing – Showing  
member of St. John’s Lutheran!  
Join one of the following Knowing-Growing-  
Showing opportunities:

**SUNDAY MORNING – 9:15 AM**

\_\_\_ “A Closer Look at the Lessons”  
Instructor – Pastor Lohmeyer

**SUNDAY MORNING – 9:15 AM**

\_\_\_ Haggai/Zechariah/Malachi,  
“Return to the Lord”,  
with Richard Neitzel

**MONDAY AFTERNOON- 2:00PM**

\_\_\_ “Living Under His Wings”  
Women’s Bible Study at school

**THURSDAY MORNING – 9:30 AM**

\_\_\_ “1<sup>st</sup> Corinthians”  
Breakfast Bible Study at church  
Instructor – Pastor Lohmeyer

[stjohnslutheranchurchoffice@gmail.com](mailto:stjohnslutheranchurchoffice@gmail.com)

**Thank You!**

We want to say "Thank You" for all the cards, gifts and words of encouragement shared with us during this blessed Christmas time. Everything was deeply appreciated and will always be remembered. We also want to say a special "Thank You" to everyone who worked so hard to make Christmas worship at St. John's Lutheran a true blessing for all who attended including, Sari Garcia and Bruce Mohlenhoff in the Church Office, the Adult and Children's Choirs, Minister of Music Tom Sax, everyone who had roles in the Christmas Eve and Day worship services, the Sunday School teachers, and everyone else who helped make Christmas at St. John's 2009 and very special one. We give God thanks for each of you and pray that you will have a Blessed and Peaceful New Year.

**Evangelical Pamphlets Available  
Project Connect**

The Evangelism Committee of St. John's offers for your interest, booklets published by the Lutheran Laymen's League, pertaining to everyday problems and concerns.

The following booklets are available at the display rack in the Narthex of the church. If there is a subject of concern not listed, please contact Rhoda Browne (718) 698-3356

Alone, Alive, Fulfilled  
 Alzheimer's  
 Battles with the Bottle  
 Coping with Cancer  
 Dealing with Depression  
 Finding Peace  
 Forgiveness Is for Giving  
 Has God Abandoned Me?  
 How to Know What's Right...And Do It  
 No Need to Fear  
 Now You're Talking  
 Overcoming A Painful Childhood  
 Parenting with Purpose  
 Prayer and Thoughts for Caregivers  
 Setting Priorities  
 Raising Your Children with Respect  
 So You Prayed for A Miracle...  
 Surviving A Loved One's Suicide  
 Surviving Breast Cancer  
 Take Heart in Your Grief  
 Talking with God  
 The Purpose of Living, The Purpose of Dying  
 The Truth About Angels  
 "THHHPPPTT!" *And Other Helpful Ways to Manage Anger*  
 Too Much to Do, Too Little Time  
 Unlocking the Prison of Guilt  
 When in Doubt...Read the Book!  
 Where's God in All of This?  
 Why Should I go to Church?

*St. John's Evangelical Lutheran Church*

| OFFICE                 | NAME             | TERM PERIOD | TERM NUMBER | NOTE                      |
|------------------------|------------------|-------------|-------------|---------------------------|
| <u>Officers:</u>       |                  |             |             |                           |
| President              | Beverly Heming   | 2008-2010   | First       |                           |
| Vice President         | Fred Bock        | 2009-2011   | First       | Previously Appointed      |
| Secretary              | Kathy Neos       | 2008-2010   | First       | Previously Appointed      |
| Treasurer              | <i>vacant</i>    | 2009-2011   |             |                           |
| <u>Board Chairmen:</u> |                  |             |             |                           |
| Elders                 | Walter Francis   | 2009-2011   | Second      |                           |
| Christian Education    | Joann Mostovoy   | 2008-2010   |             | Appointed                 |
| Evangelism             | <i>vacant</i>    | 2009-2011   |             |                           |
| Properties             | Ken Birstler     | 2008-2010   | First       | Previously filled vacancy |
| Social Ministry        | Daniel Wuerdeman | 2009-2011   | First       | Previously appointed      |
| <u>Board Members:</u>  |                  |             |             |                           |
| Elders                 | <i>vacant</i>    | 2009-2011   |             |                           |
|                        | Tom Sax          | 2008-2010   | Second      |                           |
| Christian Education    | B. J. Birstler   | 2009-2011   | Second      |                           |
|                        | Joy Rouse        | 2009-2011   | First       |                           |
|                        | Gerard Valles    | 2009-2011   | First       |                           |
|                        | Lori Chierchio   | 2008-2010   | First       |                           |
|                        | Karen Gannon     | 2008-2010   | First       |                           |
|                        | Bob Holls        | 2008-2010   | First       |                           |
| Evangelism             | Leonor Abugel    | 2009-2011   | Second      |                           |
|                        | Rhoda Browne     | 2009-2011   | Second      |                           |
|                        | Joan Mohlenhoff  | 2008-2010   | Second      |                           |
|                        | Bonnie Selletti  | 2008-2010   | First       |                           |
| Properties             | Les Szoke        | 2009-2011   | First       |                           |
|                        | Paul DeFazio     | 2008-2010   |             | Appointed                 |
| Social Ministry        | Barbara Pfaff    | 2009-2011   | First       |                           |
|                        | Vera Troncone    | 2009-2011   | Second      |                           |
|                        | Angela Small     | 2008-2010   | First       |                           |
|                        | Charles Small    | 2008-2010   | First       |                           |

Dear Parents and Friends,

We are selling Booster and Ad space for the St. John's Lutheran 2010 Yearbook. **For line boosters, the price will be \$2 per line**, with a ten word maximum per line. Single letter words, such as "A" and "I" will count as one word. However, simple punctuation counts as a letter. We are also selling larger personal or business ad space.

The pricing structure is as follows:

Full Page \$150

Half Page \$75

Quarter Page \$40

Eighth Page (Business Card size) \$20

**If your submission needs to be scanned into the computer (pictures, business cards, etc...), then it needs to be turned in by Wednesday, January 13<sup>th</sup>.**

Please make checks payable to St. John's Lutheran School and put "Booster" in the memo.

**The following form (and any attachments) must be submitted with payment.**

Name \_\_\_\_\_

Amount included \_\_\_\_\_

Phone Number \_\_\_\_\_

Personal Ad \_\_\_\_\_ Business Ad \_\_\_\_\_

Please attach any business cards, or ads that are a quarter of a page or larger, on a separate sheet of paper. You may write more boosters on the back of this sheet. Please indicate, if unclear, if an item should be scanned.

Boosters are 10 words a line:

\_\_\_\_\_  
\_\_\_\_\_  
\_\_\_\_\_  
\_\_\_\_\_

***DINE TO DONATE  
JIMMY MAX  
280 Watchogue Road  
718-983-6715  
For lunch-dinner***

***Giving  
St. John's Lutheran School  
663 Manor Rd, SI.,N.Y. 10314  
(50% back)***

***WEDNESDAY***

***JANUARY 27, 2010***

***Please render this coupon at time of  
payment***

---

Be sure to check your calendar because there is a **11:30 am dismissal - only a 1/2 day of school.** So you can go eat lunch right after school or go home change, do homework & go for dinner. Enjoy your day & be sure to eat at Jimmy Max.

## Thank You!

We want to say "Thank You" for all the cards, gifts and words of encouragement shared with us during this blessed Christmas time. Everything was deeply appreciated and will always be remembered. We also want to say a special "thank You" to everyone who worked so hard to make Christmas worship at St. John's Lutheran a true blessing for all who attended including, Sari Garcia and Bruce Mohlenhoff in the Church Office, the Adult and Children's Choirs, Minister of Music Tom Sax, everyone who had roles in the Christmas Eve and Day worship services, the Sunday School teachers, and everyone else who helped make Christmas at St. John's 2009 and very special one. We give God thanks for each of you and pray that you will have a Blessed and Peaceful New Year.

Church Office Hours  
Monday-Thursday  
9:00AM-2:00PM

Weekly bulletins Notices Due  
Tuesday @ 10:00AM  
Monthly Newsletter Notices Due  
2<sup>nd</sup> Monday of the Month

The Monthly Newsletter of St. John's  
Evangelical  
Lutheran Church  
216 Jewett Avenue (no mail)  
**School & Church Office**  
663 Manor Road, Staten Island, NY  
10314  
Church Email:  
[stjohnslutheranchurchoffice@gmail.com](mailto:stjohnslutheranchurchoffice@gmail.com)  
(718) 761-1600

## January 2010

| Mon | Tue | Wed | Thu | Fri | Sat | Sun |
|-----|-----|-----|-----|-----|-----|-----|
|     |     |     |     | 1   | 2   | 3   |
| 4   | 5   | 6   | 7   | 8   | 9   | 10  |
| 11  | 12  | 13  | 14  | 15  | 16  | 17  |
| 18  | 19  | 20  | 21  | 22  | 23  | 24  |
| 25  | 26  | 27  | 28  | 29  | 30  | 31  |