

St. John's Evangelical Lutheran Church

The Vine
MISSION STATEMENT
The mission of St. John's Evangelical Lutheran Church is to lovingly proclaim the Gospel among all people in order to form and nurture loving communities which confess by word and deed that Jesus is Lord and Savior



The December Vine 2009

The Newsletter of St. John's Evangelical Lutheran Church & School
(718) 761-1600

Divine Service:
Saturdays @ 5PM
Sundays @ 8 & 10:45 AM
Sundays @ 9:15 AM Family Education Hour
And Sunday School

ALL ARE WELCOME!

Church:
216 Jewett Avenue (Corner of Jewett & Post)
Staten Island, NY 10302 **(no mail)**
Email: stjohnslutheranchurchoffice@gmail.com
Website: www.stjohnslutheransi.org
School & Church Office
663 Manor Road, Staten Island, NY 10314

Volume 2009

Issue #12



Our Partnership December, 2009

Passion and Love

“By this we know love, that He laid down His life for us...” 1 John 3:16

“We love because He first loved us.” 1 John 4:19

“In this is love, not that we have loved God, but that He loved us and sent His Son to be the propitiation for our sins.” 1 John 4:10

Dear Members and Friends of St. John's Lutheran Church and School,

I am always a little reluctant to write too much about Christmas before it arrives, after all in their wisdom the Church Fathers have provided us with the Season of Advent to prepare for Christmas, however, since this is the December VINE, I will indulge in a little Christmas for this note to you. Keep in mind that it is mid-November (Veterans Day to be exact), not even Thanksgiving yet and I'm writing about Christmas. Yet my secretary reminded me this morning that the deadline is NOW so I'm writing.

Perhaps “Passion and Love” which is the theme I settled upon for this short note to you, does not

seem very much like Christmas at first glance. Yet I think you'll agree upon closer review, that it fits Christmas to a "T." In fact it is in the nativity of Christ, that we can clearly see God's passion to save the world and His love for it. From the first Gospel promise in Genesis 3:15 to the Savior's birth in Bethlehem's manger, God's passionate desire to save the world from sin and hell can be seen and heard. The willingness to send His only Son to suffer and die tells us much about His passion and love. Our God is a passionate, intensely involved God whose love is limitless.

There is a tendency to not want to think about the cross of Calvary at Christmas time because we want to focus on a sweet little baby in a manger in Bethlehem, to think of snow, children and toys, good food and Christmas carols. Yet the cross was to be His destination the day He was born. He came to die on the cross, to suffer for the sins of the world. That's true "passion and love." That's love that has been given you by Him! So Christmas truly is a season of giving, for God has given us His only Son and in Him is unlimited love.

So in this season of giving we remember how our passionate God loves and provides us with a Savior, who is Christ the Lord. What remains is our response – how will we respond to our passionate God who loves us no matter what?

During this time of the year, we hear much about giving – the giving of gifts. I'm wondering if perhaps the greatest gift we could give might be forgiveness – true forgiveness wrapped in love. Not

an easy thing to do perhaps, because this is also the season when nerves are on edge and people are cranky. However, before we get too bent out of shape with ungrateful and cranky friends, relatives and neighbors, let us remember that God puts up with the same thing in us. Yet He still loves and forgives us. When we are having trouble putting someone else first, let us remember how He put us first and continues to be a passionate God loving and forgiving us. When we are running out of patience, let us remember that God is patient with us, never giving up on us.

Giving the gift of love is much easier when we understand that we have been loved by a passionate God. Once we understand and truly have experienced His love, we can this Christmas time give the gift of love to others. "Beloved, if God so loved us, we also ought to love one another" (1 John 4:11). The secret to loving is living loved. It's knowing God's passionate love for you. It's knowing that Christmas is much more than toys, parties, eggnog and gifts, it's about the best gift ever given and received – Jesus Christ, the Savior born in Bethlehem – love and forgiveness through faith in Him.

My prayer is that you know that you are loved by a passionate God, who cared enough to send His only Son to be born in a cow barn's manger and then die on the cross. Then motivated by His love, give the gift of love and forgiveness to those on your Christmas list.

Judy and I wish you all the blessings of the Advent season and a joyous Christmas celebration. Please join us at St. John's adoring the Christ Child who is passionate about us and loves us.

In Christ,

Rev. Dr. Richard Lohmeyer, Pastor



December 2009

Once again we find ourselves in the season of Advent. In the crooked and perverse world, with mounting world challenges; with things crumbling all around us, sometimes even in our church, we need to properly prepare ourselves for the birthday of our Savior.

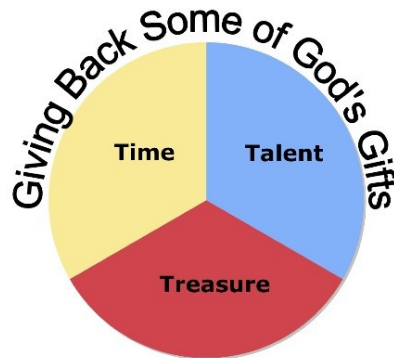
We need to be good stewards of Christmas. Some people are impressed by the air of good feeling which exists briefly at Christmas, others say there must be something right about an occasion which brings millions of people to think about someone other than themselves. The tradition is whole some, the event is holy-even with all the commercialization. As Christians we need to be good stewards of Christmas in our homes, in our families, and at our Church at St. John's. In the hustle and bustle of the season, we need to take time to meditate on the significance of this most holy day. We need to make sure that we are exchanging love more than exchanging gifts. We need to give love where we know it will not

be returned. We can do all this by being good stewards of our personal Christmas and that of our own church at St. John's.

God gives us all that brings meaning to our lives---intellect, family, friends, faith. Should our response be anything less? There is a huge blessing for those who accept stewardship as a way of life. Giving out of gratitude means returning to God not only the first fruits of our treasure, but also the time and talent He has given us. Deciding to do so is a faith decision.

May our faith be strengthened and put into action as we wait once more, the birth of Christ. May God grant it for Jesus' sake. Amen.

The Stewardship Committee



From Our Church Fathers:

Walter E. Buszin (1899-1973) Professor of Liturgics, Hymnology, and Church Music, Concordia Seminary, St. Louis, Missouri.

While Lutheran theology and church music are, of necessity, soteriological and kerygmatic in their very essence, both are likewise Trinitarian and doxological...The doxology is...more than a statement of joyous exaltation; it is a statement of faith and conviction. Small wonder that the doxology plays an important part in the glorious liturgies of the Church; small wonder that doxologies play an important part in the Lutheran service of worship and in its music; small wonder that we say ...*Theology is Doxology*.

Who is content to speak of doxology? If we accept...that a doxology is a song of praise to the Triune God, then will we find in the doxologies of Christendom another reason for insisting that theology and church music are of the same cloth, that both are twin bearers and interpreters of the *Verbum Dei*. And if the two are twins which share each other's qualities, then will we become more aware of why Christian people should sing their theology and theologize their music...We are not surprised to note...that Luther put theology and music aside of each other and that he did not subordinate music to theology. When he did subordinate, he subordinated both theology and music to the *Verbum Dei*...

Their doxological character and influence have helped to make theology and church music

wholesomely objective and God-centered in spirit, character, and expression...The objective hymn...can console, strengthen, and inspire, even when its original and chief intent was to establish people in the Christian faith, to testify, to confess, and to pray...

When thus used, church music is not only a true and faithful twin of sound Christian theology, but also an implement of God's Holy Spirit who Himself makes diligent and effective use of church music and imbues it with efficacy and power...It is time for Lutheran to give more thought to the nature and essence of Christian worship and of all that is used in the worship.

What is our conception of the Church? Is it to us no more than an organization or society in which we may hold membership, pay dues, and participate in its functions and activities? Or is it to us the Holy Christian Church, the Communion of Saints, the Body of Christ, the Bride of Christ, the Kingdom of God?...The same Holy Ghost who calls, gathers, enlightens, and sanctifies the whole Christian Church on earth, and keeps it with Jesus Christ in the one true faith, employs both the theology and the music of the Church to bring unto men, women, and children the same precious Word of which we sing in that famous hymn-stanza by Nicolai Grundtvig:

God's word is our great heritage, And shall be ours forever;
To spread its light from age to age, Shall be our chief endeavor;
Through life it guides our way, In death it is our stay;
Lord grant, while worlds endure, We keep its teachings pure,
Throughout all generations.

Principal's Corner



School is coming along swimmingly!!!!
Enrichment/ Talented & Gifted programs are a success! We have photographers, play writers, actors, authors & illustrators and medieval contraption makers.

Glorious voices can be heard during our annual Christmas Concert along with jubilant music makers.

A New Year gives us more opportunities to shine and we are ready.

Community Service projects are underway.

Thanks for all the hard work.

Best wishes for a Happy Holiday!!!

=====

DECEMBER BIRTHDAYS AND ANNIVERSARIES



Happy Birthday

- 1 Donna Hermann
- 7 Holly Olivieri
- 8 Walter Francis
- 9 Patricia Long
Peter D'Adamo
- 10 Flo Karl
- 14 Fred Bock



Happy Anniversary

- 11 Ed & Pat Long

Offerings for October & November 2009

Expansion Fund (year to date).....\$1,835
Love (year to date).....\$2,374
Hunger(year to date).....\$ 160
October 2009.....\$9,771
November 1-8, 2009..... \$5,008

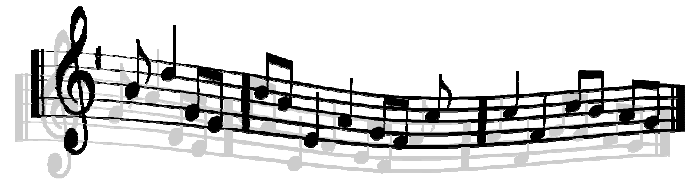
Saints and Church Dates in December 2009

6 [Nicholas](#), Bishop of Myra, c. 342
 7 [Ambrose](#), Bishop of Milan, 397
 17 [Daniel](#) and the [Three Young Men](#), prophets,
 19 [Adam](#), patriarch, and [Eve](#), matriarch
 20 [Katharina von Bora](#) Luther, renewer of the church,
 21 St. Thomas, Apostle
 24 [Christmas Eve](#)
 25 [The Nativity of our Lord](#)
 26 [Stephen](#), Deacon and Martyr
 27 [Saint John](#), Apostle and Evangelist
 28 [The Holy Innocents](#), martyrs
 29 [David](#), prophet

St. John's Lutheran Church encourages ALL to go online to view the newsletter, if possible. Click onto the church side, and then click onto the "VINE". There is also a link that has the church calendar and the serving schedule.

If you are viewing the "VINE" online and wish to opt out of the mailings, please contact the church office via e-mail, to request being taken off the mailing list.

stjohnslutheranchurchoffice@gamil.com



Dearest Friends in Christ Jesus,

HAPPY NEW YEAR! Yes, it is! The first Sunday in Advent (this year November 29) begins the church year. We begin our church year preparing for the coming of our Savior, Jesus Christ. The Advent and Christmas seasons are filled with beautiful songs which will be preformed by our children's and adult choirs and our school chorus. The best way you can support our choirs is by attending their free performances. Perhaps you might bring a friend or two along to share in this joyous time of the year. I pray everyone can put aside an hour or so of their busy schedule to support the children's and adult choirs with this years Service of Lessons and Carols which takes place at the church at 3 p.m. on Sunday December 13, 2009. Both choirs have worked very hard and both will be featuring some new songs.

Also, if you enjoy singing you might want to join our choir as we go Christmas caroling. This will take place on

Sunday December 20, 2009. Carolers will meet in the church basement at 12:00 noon after the 10:45 service. A light lunch will be served, so please, call me in advance (917 696 5227) so we are prepared for lunch and materials to hand outs. We will be visiting nursing homes and St. John's Lutheran shut ins. Everyone will car pool together as we begin and end at the church. This rewarding afternoon usually takes between 2 - 3 hours, and we will conclude in the church basement with hot beverages and sweets. Everyone is encouraged to bring their favorite holiday dessert to share with your fellow carolers.

May God richly bless you as we begin this wonderful holiday season together.

In Christ,
Tommy Sax

Choir rehearsals; adults on Tuesdays from 8 - 9 p.m., and the children on Saturdays from 4 -4:45 p.m. both at the church.

If you have any questions about the choirs, you may reach me at (917) 696 5227.

DATES TO REMEMBER

Sunday 12/13 3:00 p.m.

Service of Lessons and Carols. Free performance of the churches children's and adult choirs. Refreshments will be served in the church basement immediately following service.

Thursday 12/17 7:00 p.m.

St. John's Lutheran School Christmas Pageant K-8 in school gym. The school children will reenact the birth of Christ with a performance featuring the school chorus. All students are expected to be in attendance.

Thursday 12/24 4:00 p.m.

Christmas Eve, Children's choir singing

Thursday 12/24 11:00 p.m.
Christmas Eve, Adult choir singing

Friday 12/25 10:00 am

Christmas Day Service. If you haven't done so in the past, you should try something new this year. Before you open the presents under your Christmas tree, come celebrate the greatest gift of all, Jesus Christ! Join us as we celebrate Jesus' birthday. You will never find a gift more precious than Him.

Thurs. 12/31 5:00 p.m.

New Years Eve Service.

#####

Church Office Hours

Monday-Thursday

9:00 AM- 2:00 PM

~~~~~

~~

*St. John's Ladies Guild*

The annual Christmas Celebration of our Savior's birth is the focus of our December meeting. Through The Word and song we center on God's fulfillment of His promises, and continue our celebration with fun, food, and fellowship. Please join us on Thursday, December 3, 2009 at 7:30PM in the church basement.

This year our annual Christmas gift-giving to missions and ministries, reached \$1,900.00!

What a wonderful testimony to God's faithfulness. Along with the generosity and dedicated services of the guild members, your tangible support of our efforts has helped to make this possible. To God be the glory!

Joan Mohlenhoff  
Secretary

## **KNOWING – GROWING – SHOWING**

Increase your knowledge!

Grow spiritually and raise your level  
of spirituality!

Let your faith show in your words &  
deeds!

Be a Knowing – Growing – Showing  
member of St. John’s Lutheran!

Join one of the following Knowing-  
Growing-Showing opportunities:

### **SUNDAY MORNING – 9:15 AM**

\_\_\_\_ “A Closer Look at the Lessons”  
Instructor – Pastor Lohmeyer

\_\_\_\_ Haggai/Zechariah/Malachi,  
“Return to the Lord”,  
with Richard Neitzel

### **TUESDAY MORNING – 10:30 AM**

\_\_\_\_ “Living Under His Wings”  
Women’s Bible Study at school

### **THURSDAY MORNING – 9:30 AM**

\_\_\_\_ “1st Corinthians”  
Breakfast Bible Study at church  
Instructor – Pastor Lohmeyer

[stjohnslutheranchurchoffice@gmail.com](mailto:stjohnslutheranchurchoffice@gmail.com)



## **CHRISTMAS FOOD DISTRIBUTION**

Giving food is a way to help the poor and disabled enjoy the holiday. Jesus said, “When you give a luncheon or dinner, do not invite your friends, your brothers or relatives, or your rich neighbors; if you do, they may invite you back and so you will be repaid. But when you give a banquet, invite the poor, the crippled, the lame, the blind, and you will be blessed” (Luke 14:12-14, NIV). As we prepare for the coming of Christmas, and as we plan our special dinners and celebrations, let us share with those who are struggling due to health or financial problems. Your contributions of food, time, and money will be greatly appreciated.

Please bring nonperishable food to the church or the school by Wednesday, December 16. The following items are needed: canned vegetables, yams, fruit, cranberry sauce, gravy, stuffing, rice, soups, tuna, pasta, and tomato sauce. There is also a need for low salt or no salt items. At the church food may be placed in the baskets in the narthex and

in the basement. At the school food may be placed in designated boxes in the breezeway.

Donations of turkeys are also appreciated. If anyone would like to donate a turkey, we need to know in advance (by December 18). Please call Daniel Wuerdeman at 718-816-6461 or the church office at 718-761-1600. Volunteers are also needed to help with sorting, packing, and delivering the food.

Donations of money may be placed in the Hunger Box on Sundays or sent to the church office. Checks should be made payable to St. John's Lutheran Church and designated for Hunger.

**Dates To Remember**

Wednesday, December 16 - Final Collection of Food at Church & School

Wednesday, December 16 - 8:00 p.m. at Church – Sorting/Packing Food

Saturday, December 19 - 10:00-12:00 Distribution of Food

Sunday, December 20 - 12:00 Distribution of Food



**Christmas Toy Drive**

A table for gifts for children will be set up in the church basement following each worship service on November 29, December 6, and December 13. Those who would like to donate a gift are asked to select a child, buy and wrap the gift, and return it by December 13. The gifts will be given to children in the families on the food distribution list.

\*\*\*\*\*



**Congratulations to**

Robert Paul Heidrich  
and  
Angela Rebecca Wiggins  
(Judy & Pastor's Daughter)

On their marriage  
November 28, 2009

**Evangelical Pamphlets Available  
Project Connect**

The Evangelism Committee of St. John's offers for your interest, booklets published by the Lutheran Laymen's League, pertaining to everyday problems and concerns.

The following booklets are available at the display rack in the Narthex of the church. If there is a subject of concern not listed, please contact Rhoda Browne (718) 698-3356

Alone, Alive, Fulfilled  
Alzheimer's  
Battles with the Bottle  
Coping with Cancer  
Dealing with Depression  
Finding Peace  
Forgiveness Is for Giving  
Has God Abandoned Me?  
How to Know What's Right...And Do It  
No Need to Fear  
Now You're Talking  
Overcoming A Painful Childhood  
Parenting with Purpose  
Prayer and Thoughts for Caregivers  
Setting Priorities  
Raising Your Children with Respect  
So You Prayed for A Miracle...  
Surviving A Loved One's Suicide  
Surviving Breast Cancer  
Take Heart in Your Grief  
Talking with God  
The Purpose of Living, The Purpose of Dying  
The Truth About Angels  
*"THHHPPPTT!" And Other Helpful Ways to Manage Anger*  
Too Much to Do, Too Little Time  
Unlocking the Prison of Guilt  
When in Doubt...Read the Book!  
Where's God in All of This?  
Why Should I go to Church?

*JOIN US FOR ADVENT WORSHIP*

**Wednesday - December 2nd, 9th and 16th**

**Soup Supper at 6:00 P.M.**

**Worship - 7:00 P.M.**

The Stories of Advent:

Week one - Advent Silence - Zechariah's Story

Week two - Advent Expectation - Elizabeth's Story

Week three - Advent Faith - Mary's Story

**Sunday's in Advent Sermon Themes -  
"HE Will COME!"**

**November 29th - "He Will Come - The King of Kings"**

**December 6th - "He Will Come - To Hearts Prepared"**

**December 13th - "He Will Come - Reassuring Doubts"**

**December 20th - "He Will Come - The Beauty of Christmas"**

**Join us Saturday at 5:00 P.M. Sunday at 8:00 and 10:45**



## Christmas Worship Schedule

### *Christmas Eve*

4:00 P.M. Candle Light Family Worship  
with Children's Choir and Sunday School

11:00 P.M. Candle Light With Adult Choir  
and the Holy Communion

Christmas Day the Day of Our Lord's Birth

10:00 A.M. Festive Worship, Adult Choir  
and Holy Communion

O Come Let Us Adore Him!



New Years' Eve - December 31

5:00 - Worship with Holy Communion

## *St. John's Evangelical Lutheran Church*

| OFFICE                 | NAME             | TERM PERIOD | TERM NUMBER | NOTE                      |
|------------------------|------------------|-------------|-------------|---------------------------|
| <u>Officers:</u>       |                  |             |             |                           |
| President              | Beverly Heming   | 2008-2010   | First       |                           |
| Vice President         | Fred Bock        | 2009-2011   | First       | Previously Appointed      |
| Secretary              | Kathy Neos       | 2008-2010   | First       | Previously Appointed      |
| Treasurer              | <i>vacant</i>    | 2009-2011   |             |                           |
| <u>Board Chairmen:</u> |                  |             |             |                           |
| Elders                 | Walter Francis   | 2009-2011   | Second      |                           |
| Christian Education    | Joann Mostovoy   | 2008-2010   |             | Appointed                 |
| Evangelism             | <i>vacant</i>    | 2009-2011   |             |                           |
| Properties             | Ken Birstler     | 2008-2010   | First       | Previously filled vacancy |
| Social Ministry        | Daniel Wuerdeman | 2009-2011   | First       | Previously appointed      |
| <u>Board Members:</u>  |                  |             |             |                           |
| Elders                 | <i>vacant</i>    | 2009-2011   |             |                           |
|                        | Tom Sax          | 2008-2010   | Second      |                           |
| Christian Education    | B. J. Birstler   | 2009-2011   | Second      |                           |
|                        | Joy Rouse        | 2009-2011   | First       |                           |
|                        | Gerard Valles    | 2009-2011   | First       |                           |
|                        | Lori Chierchio   | 2008-2010   | First       |                           |
|                        | Karen Gannon     | 2008-2010   | First       |                           |
|                        | Bob Holls        | 2008-2010   | First       |                           |
| Evangelism             | Leonor Abugel    | 2009-2011   | Second      |                           |
|                        | Rhoda Browne     | 2009-2011   | Second      |                           |
|                        | Joan Mohlenhoff  | 2008-2010   | Second      |                           |
|                        | Bonnie Selletti  | 2008-2010   | First       |                           |
| Properties             | Les Szoke        | 2009-2011   | First       |                           |
|                        | Paul DeFazio     | 2008-2010   |             | Appointed                 |
| Social Ministry        | Barbara Pfaff    | 2009-2011   | First       |                           |
|                        | Vera Troncone    | 2009-2011   | Second      |                           |
|                        | Angela Small     | 2008-2010   | First       |                           |
|                        | Charles Small    | 2008-2010   | First       |                           |



### Christmas Poinsettias

Once again we invite you to place as memorials the poinsettias used for decorating the sanctuary at Christmas. The cost per plant is \$ 11.00. You may order a plant by calling the church office, giving your request to Rhoda Browne or mailing your request, together with your check payable to St. John's Lutheran Church to the church office. **The deadline to order a plant is December 3, 2009.** As usual, these plants will be distributed to our shut-in members.

### Poinsettias Order Form

I/We would like to order \_\_\_\_\_ poinsettias.  
Please use the following when you publish this gift.

**In Memory of:**

---

---

---

**In Recognition/honor of:**

---

---

---

**By:**

---

---

---

Additional order forms may be found in the narthex or at the table. Cut out and return to the church office or put in an envelope and place in the offering plate

### Christmas Memorial Lights



The lights on the church Christmas tree will be memorialized. If you wish to remember a departed loved one in this way, please send your information to the church office. The cost is \$1.00 per name.

**The deadline is December 20, 2009**

In Loving

Memory of:

By:

---

---

---

---

---

---

---

---

---

---

## WHY IS ADVENT SUCH AN IMPORTANT SEASON IN THE LIFE OF THE CHURCH?

While the rest of secular society is already caught up in the frantic rush of shopping, decorations, parties, and other distractions, the church takes pause during Advent to contemplate the wonder of God's underserved mercy and love in Jesus Christ. Christians approach the Advent season much as expectant parents approach the months before a child is born. There are feelings of exhilaration, uneasiness, longing, and awe as the day of arrival approaches. Just as parents do everything they can to get ready and put things into good order, God's people prepare themselves at home and at church for the coming of the Lord by exercising the disciplines of Advent: confession and repentance, fervent prayer, immersion in Scripture, fasting. Many congregations conduct special [mid-week Advent worship services](#) and hand out special devotional booklets to give their members further opportunities to prepare their hearts for the coming of our Lord and Savior.

### **Mistletoe and Holly**

Two hundred years before the birth of Christ, the Druids used mistletoe to celebrate the coming of winter. They would gather this evergreen plant that is parasitic upon other trees and used it to decorate their homes. They believed the plant had special healing powers for everything from female infertility to poison ingestion. Scandinavians also thought of mistletoe as a plant of peace and harmony. They associated mistletoe with their goddess of love, Frigga. The custom of kissing under the mistletoe probably derived from this belief. The early church banned the use of mistletoe in Christmas celebrations because of its pagan origins. Instead, church fathers suggested the use of holly as an appropriate substitute for Christmas greenery.

### **Poinsettias**

Poinsettias are native to Mexico. They were named after America's first ambassador to Mexico, Joel Poinsett. He brought the plants to America in 1828. The Mexicans in the eighteenth century thought the plants were symbolic of the Star of Bethlehem. Thus the Poinsettia became associated with the Christmas season. The actual flower of the poinsettia is small and yellow. But surrounding the flower are large, bright red leaves, often mistaken for petals.

## The Christmas Tree

The Christmas Tree originated in Germany in the 16th century. It was common for the Germanic people to decorate fir trees, both inside and out, with roses, apples, and colored paper. It is believed that Martin Luther, the Protestant reformer, was the first to light a Christmas tree with candles. While coming home one dark winter's night near Christmas, he was struck with the beauty of the starlight shining through the branches of a small fir tree outside his home. He duplicated the starlight by using candles attached to the branches of his indoor Christmas tree. The Christmas tree was not widely used in Britain until the 19th century. It was brought to America by the Pennsylvania Germans in the 1820's.

## Xmas

This abbreviation for Christmas is of Greek origin. The word for Christ in Greek is **Xristos**. During the 16th century, Europeans began using the first initial of Christ's name, "X" in place of the word Christ in Christmas as a shorthand form of the word. Although the early Christians understood that "X" stood for Christ's name, later Christians who did not understand the Greek language mistook "Xmas" as a sign of disrespect.

The Monthly Newsletter of St. John's  
 Evangelical  
 Lutheran Church  
 216 Jewett Avenue (no mail)  
**School & Church Office**  
 663 Manor Road, Staten Island, NY  
 10314  
 Church Email:  
[stjohnslutheranchurchoffice@gmail.com](mailto:stjohnslutheranchurchoffice@gmail.com)  
 (718) 761-1600

### December 2009

| Sunday | Monday                             | Tuesday | Wednesday | Thursday                            | Friday                             | Saturday                             |
|--------|------------------------------------|---------|-----------|-------------------------------------|------------------------------------|--------------------------------------|
|        |                                    | 1       | 2         | 3                                   | 4                                  | 5                                    |
| 6      | 7                                  | 8       | 9         | 10                                  | 11                                 | 12<br><small>Hanukkah begins</small> |
| 13     | 14                                 | 15      | 16        | 17                                  | 18                                 | 19                                   |
| 20     | 21<br><small>Winter begins</small> | 22      | 23        | 24<br><small>Christmas Eve</small>  | 25<br><small>Christmas Day</small> | 26<br><small>Kwanzaa</small>         |
| 27     | 28                                 | 29      | 30        | 31<br><small>New Year's Eve</small> |                                    |                                      |

www.FreePrintable.net